



# COLLEGE ON HILLS



## Diploma & Certificates

- Diploma in early childhood [Primary Teaching]
- Engineering Faculty
- Office Admin
- Human Resource
- Management Assistant
- Information Tech

## Health Care

- Health Promotion Officer L3
- Community Health Work L4
- Safety Management (OHS)
- Social Auxiliary Work L4
- Beauty Therapy
- Fashion Design

# ARE YOU READY? 2022/23 REGISTRATIONS

**MAKING EDUCATION BEST SINCE 2010**



DHET REG NO: 2010/FE07/106

QCTO ACCRED: SDP1124/19/0039 | HWSETA ACCRED: HW592LP00073

[www.collegeonhills.co.za](http://www.collegeonhills.co.za)



# ENGINEERING FACULTY

Entry Requirement: Grade 9, With Or Without Matric

Registration fee R300 for all

## ELECTRICAL ENGINEERING N1-N6

- Engineering Mathematics, Engineering Science N1-N6
- Industrial Electronics & Electrotechnics N1-N6

Full time Duration 3 Months Total R3300 Deposit R1 150 Monthly R716  
 Full time Duration 6 Months R5500 Deposit Monthly R725  
 Online & Distance 6 Months R4500 Monthly R553  
 Distance & online 3 Months study Total R2800 Deposit R1 150 Monthly R550

## BOILER MAKER N1-N6

- Mathematics, Engineering Science N1-N6
- Plating & Structural Steel Drawing N1-N6
- MotorTrade Theory/metalworks N1-N6

Duration full time 3 Months Total R3300 Deposit R1 150 Monthly R716  
 Distance and online study R2800 Deposit R1 150,00 Monthly R550  
 Duration full time 6 Months Total R5500 Deposit R1 150 R725

## MECHANICAL ENGINEERING N1-N6

- Engineering Science, Mathematics N1-N6
- Mechanical Draughting, Mechanotechnology N1-N6
- Power Machines, Strength Of Materials & Stucturers N1-N6

Duration full time 3 Months Total R3300 Deposit R1 150 Monthly R716  
 Distance and online study Total R2800 Deposit R1300 Monthly R550  
 Duration full time 6 Months Total R5500 Deposit R1 150 R725

## DIESEL & MOTOR MACHANICS N1-N6

- Mathematics, Engineering Science N1-N6
- Engineering Drawing & Fitting & Machining Theory N1-N6

Duration full time 3 Months Total R3300 Deposit R1 150 Monthly R716  
 Distance and online 3 Months study R2800,00 Deposit R1 150,00 Monthly R550  
 Duration full time 6 Months Total R5500 Deposit R1 150 Monthly R725

## FITTING & TURNER N1-N3

- Mathematics, Engineering Science N1 -N3
- Engineering Drawings, Motor Trade Theory N1 -N3
- Diesel Trade Theory N1 -N3

Duration 3 Months R3300,00 Deposit R1 150,00 Monthly R716,00  
 Distance and online study R2800 Deposit R1 150,00 Monthly R550

## RIGGING ENGINEERING N1 -N3

- Mathematics, Engineering Science, N1 -N3
- Engineering Drawing, Rigging Theory N1 -N3
- Mechanotechnology N1 -N3

Duration 3 Months R3300,00 Deposit R1 150,00 Monthly R716,00  
 Distance and online study R2800 Deposit R1 150,00 Monthly R550

## BUILDING & CIVIL TECHNOLOGY N1-N6

- Building Drawing
- Building Science
- Mathematics

Duration full time 3 Months Total R3300 Deposit R1 150 Monthly R716  
 Distance and online study Total R2800 Deposit R1300 Monthly R550  
 Duration full time 6 Months Total R5500 Deposit R1 150 R725

TEXTBOOK	PRICE ( No credit on books, Cash only)
ENGINEERING STUDIES	R120.00 EACH



# MANAGEMENT FACULTY

Entry Requirement:  
With Matric



**TEXTBOOK**  
PRICE ( No credit on books, Cash only)  
**R120.00 PER MODULE**

## DIPLOMA MANAGEMENT ASSISTANCE

- Office Practice N4-N6
- Communication N4-N6
- Information Processing N4-N6
- Entrepreneurship & Business Management N4

**Registration fee R300**

Full time 06 Months total fees R7500, Deposit R1500 Monthly R1000,00  
 Online & Distance Learning R6000,00 Deposit R1500,00 Monthly R750  
 Full time 12 Months fees R13000,00 Deposit R1500 Monthly R958  
 Online or Distance Learning R10,000,00 Deposit R1500.00 Monthly R708

## MARKETING MANAGEMENT N4-N6

- Marketing Management
- Computer Practice
- Entrepreneurship & Business Management
- Sales Management

**Registration fee R300**

Full time 06 Months total fees R7500, Deposit R1500 Monthly R1000,00  
 Online & Distance Learning R6000,00 Deposit R1500,00 Monthly R750  
 Full time 12 Months fees R13000,00 Deposit R1500 Monthly R958  
 Online or Distance Learning R10,000,00 Deposit R1500.00 Monthly R708

## DIPLOMA HUMAN RESOURCES N4-N6

- Personnel Management N4-N6
- Management Communication N4-N6
- Computer Practice N4-N6
- Entrepreneurship & Business Management N4-N6

**Registration fee R300**

Full time 06 Months total fees R7500 Deposit R 1500 Monthly R1000,00  
 Online & Distance Learning R6000,00 Deposit R1500 Monthly R750  
 Full time 12 Months fees R13000,00 Deposit R1500 Monthly R958  
 Online or Distance Learning R10,000,00 Deposit R1500.00 Monthly R708



## TACTICAL ROAD TRAFFIC

### Entry Requirement: With Matric

- ✓ To equip the candidate with tools and techniques that help to understand the concepts of Tactical Road Traffic Operations within the context of the Road traffic Safety Management environment.
- ✓ To enable learners to understand how different functional perspectives work together in approaching and resolving real and complex problems of Tactical Road Traffic Operations.
- ✓ To give learners an opportunity to understand and apply a range of management concepts in resolving management problems in their own organisation.
- ✓ To enable First Line Supervisor, Junior Managers and General Managers become effective and efficient in their line of work.
- To assist candidates to implement performance improvements at a team, project or small organization level.



**TEXTBOOK PRICE ( No credit on books, Cash only) R1700.00 PACK**

**Registration fee R300**

**Total fees 1 year R14500,00 Deposit R1950,00, Monthly installment R1050**

Accredited Programs	NQF LEVEL CRE	
Vehicle Identification 253984	5	4
Impoundment of Vehicles 253989	5	4
Vehicle Circulation System in relation to vehicle crime investigation 253977	5	7
Attend to and manage a Collision Scene	5	12

## SOCIAL AUXILLARY WORK NQF L 04

### Job Opportunity

### Entry Requirement: With Matric

- Knowledge of Child protection laws
- Pre and Post-test HIV and AIDS Counselling
- Working knowledge of Law & Policy as it applies to children, child protection & families
- Assessment of the psychosocial needs of children and their caregivers
- Outreach Activities and Community Engagement
- Referrals and follow-ups on other services needed by the child

### Registration Fee R300

- Full Time Duration 1 Year R14000, Deposit R2000,00, Monthly R1000,00
- 3 Months Computer Deposit R1800, Monthly R1 185, Total R16000
- Distance /online Deposit R1500, Monthly R875, R12000

## SOCIAL AUXILLARY WORK NQF L 05

### Job Opportunity

**SAQA ID: 98890**



- Working knowledge of Law and Policy as it applies to children, child protection and families;
- Knowledge of Child protection laws
- Assessment of the psychosocial needs of children and their caregivers;
- Outreach Activities and Community Engagement;
- Pre and Post-test HIV and AIDS Counselling; Referrals and follow-ups on other services needed by the child;

### Registration Fee R300

Full Time Duration 1 Year R16000,00 Deposit R2500,00, Monthly R1 125,00, Distance /Online 1year R14000,00 Deposit R2000,00 Monthly R1000,00



# EARLY CHILDHOOD NQF Level 4

with or without matric

- Assess In-Class and Homework Assignments
- Encourage and Engage Children
- Create Lesson Plans
- Lead Daily Activities
- Monitor Children
- Attend Staff Meetings
- Computer Microsoft (Outlook, Excel, Word)

**TEXTBOOK**  
PRICE ( No credit on books, Cash only)  
**R1700.00 PACK**

**PRACTICAL & THEORY PROVIDED**



# DIPLOMA EARLY CHILDHOOD NQF L5

SACE on completion matric or ECD L4

- Create Lesson Plans
- Lead Daily Activities
- Monitor Children
- Assess In-Class & Homework Assignments
- Encourage and Engage Children
- Attend Staff Meetings
- Computer Microsoft (Outlook, Excel, Word)

**TEXTBOOK**  
PRICE ( No credit on books, Cash only)  
**R1800.00 PACK**

**Registration fee R300**  
Full time 1 Year, Total 13000,000, Deposit R1500,00, Monthly R958,00  
3 Months Computer Studies Deposit R1950, Monthly R1250, Total R17000  
Distance and Online Total R11500,00, Deposit R1300,00, Monthly R850,00

**Registration fee R300**  
Full time 18 Months, Total R20,000, Deposit R2000, Monthly R1000  
3 Months Computer Studies Deposit R2300, Monthly R1150, Total R23000  
Distance and Online Total R18500, Deposit R1700, Monthly R933

# EARLY CHILDHOOD NQF Level 4

with or without matric



**SAQA ID: 97542**  
**PRACTICAL & THEORY PROVIDED**

**Registration fee R300**      **250 per module**  
Full time 18 Months, Total R13000,00, Deposit R1500,00, Monthly R958,00... Distance and Online  
Total R11500,00, Deposit R1300,00, Monthly R850,00



# HEALTH FACULTY

Entry Requirement: Grade 11 Or Matric

## HEALTH PROMOTION OFFICER (HPO)

### Job Opportunity

- Sets up displays on health issues.
- Develops communication objectives in relation to health issues.
- Prepares publicity & or presentations on health issues.
- Gives presentations to community groups on health issues to increase public awareness.
- Writes material to assist in the promotion of health issues.
- Identifies the audience most at need or risk & establishes the most appropriate method to reach that audience.

### Registration fee R300

Full Time Duration 1 Year Total R14000 Deposit R2000 Monthly R1000  
 3 Months Computer Studies Deposit R1800, Monthly R1 183, Total R16000  
 Distance /Online R10,000.00 Deposit R1 100 Monthly R750

## COMMUNITY HEALTH WORK L 04

### Job Opportunity

Grade 11 Or Matric

- Monitor nutrition of children, elderly, or other high-risk groups.
- Perform basic diagnostic procedures, such as blood pressure screening, breast cancer screening, or communicative disease screening.
- Conduct home visits for pregnant women, new-borns infants, or other high-risk individuals to monitor their progress or assess their needs.
- Diagnostic screenings, such as breast cancer screening, pap smears, glaucoma tests, or diabetes screenings.

### Registration fee R300

Duration 1 year Total R14000 Deposit R2000 Monthly R1000  
 3 Months Computer Studies Deposit R1800, Monthly R1 100, Total R15000  
 Distance or Online Total R135000 Deposit R1950 Monthly R962

### TEXTBOOK

PRICE ( No credit on books, Cash only)

R1600.00 PACK

## SAFETY MANAGEMENT (OHS) L2

### Modules

- \* Apply environmental management tools to assess impacts
- \* Conduct an investigation into workplace safety, health & environmental incidents
- \* Conduct workplace Occupational Health & Safety (OHS) inspections
- \* Control workplace hazards and risks
- \* Demonstrate an understanding of Occupational Hygiene

Duration 1 year R14500,00 Deposit R1850,00 Monthly R1054  
 Distance/Online R13500,00 Deposit R1750,00 Monthly R979

## SAFETY MANAGEMENT (OHS) L5

### Job Opportunity

- Work Safety Management health and safety manager duties.
- Respond to any safety complaints and concerns raised by employees.
- Employee Health Screening.
- Safety manager responsibilities construction.
- Conduct frequent safety inspections and checks.
- Manage emergency procedures

R350 per module

Registration fee R300

Duration 1 year R16000,00 Deposit R2500,00 Monthly R1 125,00  
 Distance/Online R14000,00 Deposit R2000,00 Monthly R1000

### TEXTBOOK

PRICE ( No credit on books, Cash only)

R1800.00 PACK





# DRESS MAKING (Fashion Design)

Material For Practicals R2500,00 | Books R2200,00

## Module

- Applied Techniques
- Design Development
- Digital Illustration
- Fashion Theory
- Fashion Illustrator

MONTHLY	DEPOSIT	TOTAL	PERIOD
R1100,00	R2300,00	R15500,00	1 Year

# EDUCARE N4-N6 Modules

MATRIC ONLY

- Educare Didactics N4-N6
- Child Health N4-N6
- Education N4-N6
- Day Care Personnel N4-N6
- Development N4-N6

## Job Opportunity

- Planning, preparing and delivering lessons.
- Assessing and reporting on the behaviour of students.
- Teaching students based on national curriculum guidelines within your specialist subject areas.
- Supporting the leadership team to implement the school's development plan.
- Encouraging student participation in lessons and in other school related activities.

## Registration fee R300

Full time 06 Months total fees R7500 Deposit R1500 Monthly R1000,00  
 Online & Distance Learning R6000,00 Deposit R1500,00 Monthly R750  
 Full time 12 Months fees R13000,00 Deposit R1500 Monthly R958  
 Online or Distance Learning R10,000,00 Deposit R1500.00 Monthly R708



## BE PREPARED FOR THE 4TH INDUSTRIAL

Entry Requirement: With Or Without Matric

### IT COMPUTER & END USER

ACCRED:2014/07/3178

#### Job Opportunity

- Configure and manage security/software updates.
- Configure and manage spam/anti-virus software updates.
- Monitors desktop/mobile/peripheral device performance and supports system engineers in expanding and tuning operating platforms to meet CRS needs.
- Performs maintenance, backup and recovery tasks for desktop/mobile/peripheral device

#### Registration fee R300

6 Months fees R7500,00, Deposit R1000, Monthly R1000

TEXTBOOK	PRICE ( No credit on books, Cash only)
Diploma INFORMATION TECHNOLOGY	R1800 PACK
IT SYSTEM DEVELOPMENT	R1800.00 PACK
IT END USER FULL QUALIFIATION	R1500,00

## DIPLOMA: INFORMATION TECHNOLOGY

#### Job Opportunity

- To develop (as per software development lifecycle) the company applications for desktops and mobile devices as per user business requirements.
- Applications/software development and maintenance
- Acquisition and implementation of business system solutions.
- Coordinates the utilisation of emerging technology to enhance company's Information Management and Information Systems.
- Implement and maintain applications.

#### Registration fee R300

1 year R16000 Monthly Deposit R1800,00 Monthly R1150

1 year Distance or Online R14000 Monthly R1800,00 Monthly R1075





# WHOLESALE AND RETAIL OPERATIONS

## Job Opportunity

- Elective 114890 Perform office functions in a wholesale and retail outlet
- Elective 117899 Pick stock in a distribution centre/warehouse
- Elective 117900 Plan self-development
- Elective 114894 Process payment at a Point of Sales (POS)
- Elective 13885 Provide information to customers in a Contact Centre
- Elective 114889 Record transactions
- Elective 243676 Source and collect products for resale
- Elective 243712 Address customer queries in a wholesale environment
- Elective 114900 Sell products to customers in a Wholesale and Retail outlet

### Registration fee R300

Full Time Duration 1 Year R13000 Deposit R1500,00 Monthly R958,00  
 Distance /Online 1 year R1 1000.00 Deposit R1200 Monthly R816,00

# RETAIL INSURANCE

## Job Opportunity

- Core 117132 Explain basic economics
- Core 117146 Indicate the scope of life insurance in South Africa
- Core 117134 Indicate the scope of short term insurance in South Africa
- Core 117171 Manage time effectively to enhance productivity and enable a balanced lifestyle
- Core 114979 Operate a computer workstation in a business environment
- Core 120019 Analyse new developments reported in the media that could impact on Short Term insurance
- Core 14991 Apply the law of contract to insurance
- Core 119676 Apply the skills of customer care in a specific work environment
- Core 119265 Manage risk in own work environment

### Registration fee R300

1 year R16000 Monthly Deposit R1800,00 Monthly R1150  
 1 year Distance or Online R14000 Monthly R1800,00 Monthly R1075



# SHORT COURSES

Entry Requirements: With Or Without Matric

## COURSE

Registration fee R300

CLASSES START MONTHLY AFTER REGISTRATION

- ✔ Call Centre
- ✔ Call Centre/Computer Training
- ✔ Secretarial/Reception
- ✔ End User Computing
- ✔ Computer Literacy
- ✔ Cashier, Typing, Data Capture
- ✔ Stock Control & Storekeeping
- ✔ Waiter & Bar Tender

DEPOSIT	MONTHLY	TOTAL	DURATION
R 600	R 1000	R1600	1 MONTH
R 600	R 1000	R2600	2 MONTHS
R 600	R 1000	R3600	3 MONTHS
R 600	R 850	R5700	6 MONTHS
R 1000	R 833	R 3500	3 MONTHS
R 600	R 900	R1500	1 MONTH
R 1500	R 1000	R3500	2 MONTHS
R 500	R 1500	R 2000	1 MONTH

## MINING & CONSTRUCTION SAFETY COURSES

Accredited skills program (HW/SETA)

	DEPOSIT	TOTAL	DURATION
1. Health & Safety Representative 74290 NC: Occupation Health, Safety & Environment 259619 CREDITS 14	R 1500	R 3500	3 WEEKS
2. SHE Representative & Safety 79806 NC: Occupational Hygiene & Safety CREDITS 36	R 200	R 5000	4 WEEKS
3. Basic Health & Safety 74269 NC: FIRE FIGHTING: CREDITS 05	R 1500	R 2500	5 DAYS
4. Safety Official Health, safety & Environment CREDITS 28	R 1500	R 3500	3 WEEKS
5. SHEMRACK Safety Officer Training CREDITS 24	R 1500	R 4000	4 WEEKS
6. Advance Safety Management Officer NOF Level 5 Skills Programs CREDITS 39	R 2000	R 6000	4 WEEKS
7. First Aider (HW/SETA) Credits 14	R 1500	R 3500	2 WEEKS
8. First Aid (Department of Labour) LEVEL 01, 02, & 03	R 2000	R 4500	5 DAYS

# MATRIC UPGRADE & RE-WRITE CLASSES

Over 21 Years Of Age Study 7 Subjects to Give You Matric Qualification R150 Per Subject, June Exam

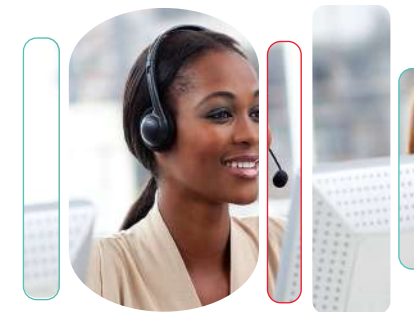
Registration fee R500

ADMIN FEE: R700, 6 MONTH

	MONTHLY	PAYMENT	
1 SUBJECT	MONTHLY	PAYMENT	R300
2 SUBJECTS	MONTHLY	PAYMENT	R600
3 SUBJECTS	MONTHLY	PAYMENT	R900
4 SUBJECTS	MONTHLY	PAYMENT	R1000

## SUBJECTS

Mathematics  
Maths Literacy  
Physical Science  
Life Science  
Accounting  
English  
Economics  
History  
Geography  
Business Studies



## TEXTBOOK

PRICE (No credit on books, Cash only)

SHORT COURSES

R120.00 EACH





# Office Administrator L5

**Module: Book 250 Per Module SAQA ID 97542**

- Business and Office Administration 1 (BOA1)
- Bookkeeping to Trial Balance (BKTB) -Business Literacy (BUSL)
- Marketing Management and Public Relations (MMPR)
- Business Law and Administrative Practice (BLAP)
- Cost and Management Accounting (CMGT)

## Job Opportunity

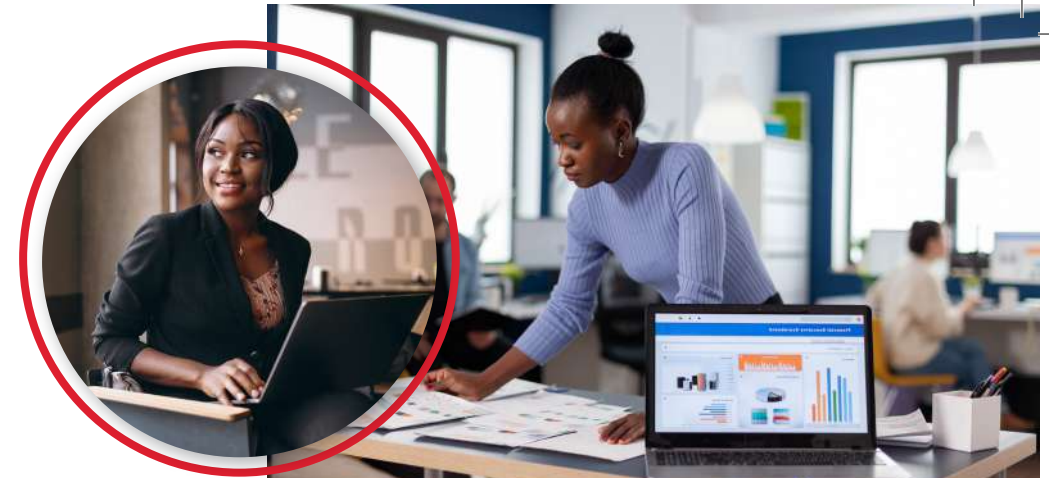
- \* Senior Administrator
- \* Admin Office Support/Business Administration
- \* Personal Assistant
- \* Human Resources Administrator

## Full Time Studies

MONTHLY	DEPOSIT	TOTAL	PERIOD
R1125,00	R2500,00	R16000,00	1 Year

## Online & Distance Study

MONTHLY	DEPOSIT	TOTAL	PERIOD
R1000,00	R2000,00	R14000,00	1 Year



# Projects Management L5

**SAQA ID:101869 300 per module**

MONTHLY	ADMIN	TOTAL	PERIOD
R1100,00	R1900,00	R15500	1 Year

# Air Conditioning Training

DEPOSIT	MONTHLY	TOTAL	PERIOD
R1500,00	R1500,00	R4500	2 Month

# Refrigeration Training

DEPOSIT	MONTHLY	TOTAL	PERIOD
R1500,00	R1500,00	R4500	2 Month

# MANICURE PEDICURES

**Practical & Theory: 50 max hours**      **Part Time, Full Time**

- Structure & anatomy of the nail & nail bed
- Diseases & disorders of nail, hand & foot
- Sanitation & Bacteriology
- Products & equipment needed
- Setting up your work area
- UV Soak off Gel (Shellac) application & removal



Course Fee R 5 100 X 4 Week & Practicals  
Kit price: R2 300

# NAIL TECHNOLOGY

**Module One**      **Part Time, Full Time**

Introduction to Nail Technology  
Course Overview  
Recording Client Information  
Anatomy of the Nail  
Diseases & Disorders  
Sanitation & Hygiene  
Nail Shapes

BOOKS R750:  
Practical Kit R850

Period 4 Months  
Total R5500,00 Deposit  
R1700 Monthly R950

# RELAXATION MASSAGE

**Module One**      **Part Time, Full Time**

History of massage  
Anatomy and physiology  
Benefits of massage  
Levels of massage  
Basic Technique and strokes  
Room and work area set up  
Equipment and products needed

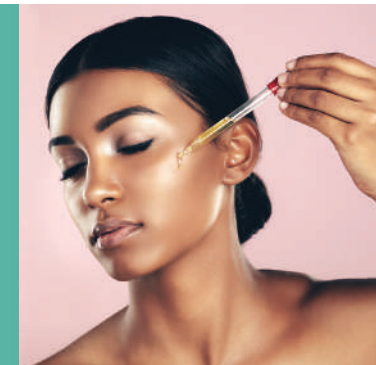
BOOKS R1500  
Practical Kit R1850

Period 8 Months  
Total R9500, Deposit  
R1800, Monthly R960

# BEAUTY THERAPY

**Module One**      **Part Time, Full Time**

- Customer relationship management
- Introduction to business English
- Anatomy and physiology for therapists
- Professional salon skills
- Nail care theory
- Lash and brow services
- Introduction to massage
- Facial skin care theory



12 Months Total R19500, Deposit R2100, Monthly R1450  
Textbook R2100 | Make up kit: R2000 for practical's for the year

# MAKE-UP APPLICATION

**Module One**      **Part Time, Full Time**

- Makeup application
- Excellence in service: advanced
- Professional Salon Skills
- Anatomy and Physiology
- Make-Up Application 1
- Make-Up Application 2

Textbook costs included!

Text books & study material  
R550,00 Make up kits R450

Period 4 Months Total R5500, Deposit R1700, Monthly R950

# FACIAL SKIN CARE

**Module One**      **Part Time, Full Time**

- Facial skin care techniques
- Entrepreneurship
- Excellence in service: advanced
- Business and office administration

- Text books & study material R350
- Practical kit R650

What is included in the course fees?

Facial Skin Care  
Techniques kit items

Period 1 Month, Total R4500, Deposit  
R1300 Books R800 Make Up Tool R850





**SECURITY COURSES**  
(T No.1863)  
with or without matric

**IT (SYSTEMS DEVELOPMENT) NQF L 5 ID 48872**

**CORE MODULES**

**Registration fee R300**

- Core 115359 - Demonstrate an understanding of the handling of error in a computer programming.
- Core 115391 - Demonstrate an understanding of the principles of the internet and the world-wide.
- Core 115358 - Apply information gathering techniques for computer system development
- Core 115365 - Apply the principles of designing computer system inputs and outputs
- Core 114048 - Create database access for a computer application using structured query language
- Core 114049 - Demonstrate an understanding of Computer Database Management Systems
- Core 115373 - Demonstrate an understanding of sort and search techniques used in computer

**Distance/Online & Face to Face Learning Available**

1 year R15500,00 Deposit R2300 Monthly R1100  
Distance 1 year R12500 Deposit R2000 Monthly R890

**R300 Registration Fee**

● **STUDY BOOKS: R90 PER BOOK** ● **PSIRA COURSE REPORT: R250 per Grade**

COURSE GRADE	CASH FEES	DURATION	COURSE GRADE	CASH FEES	DURATION
E	R 450	1 Week	C-B	R 1400	2 Weeks
D	R 450	1 Week	B-A	R 1900	2 Weeks
C	R 450	1 Week	E-A	R 3000	5 Weeks
B	R 550	1 Week	E-B	R 2400	3 Weeks
A	R 1100	2 Weeks	E-C	R 1900	3 Weeks
E-D	R 1200	2 Weeks	E-D-C	R 2000	3 Weeks
D-C	R 1200	2 Weeks	Instructor Course	R 3000	4 Weeks



# MINING MACHINERY TRAINING

## 4 DAYS THEORY & 4 PRACTICALS

With Or Without Matric

### 4 DAYS THEORY & 4 PRACTICALS

✓	8 DAYS: FOKLIFT	R1700
✓	EXCAVATOR	R 4500
✓	FRONT LOADER	R 4500
✓	LHD SCOOP	R 4500
✓	BOB CAT	R 4500
✓	TLB	R 4500
✓	BULLDOZER	R 4500
✓	DUMP TRUCK	R 4500
✓	FRONT & LOADER	R 4500
✓	8 DAYS: 777 Dump Truck	R 5300
✓	8 Days: Drill Rig Machinery	R 4950
✓	UV	R5300



**PART TIME,  
FULL TIME**

**R300  
REGISTRATION  
FEE**

**BOOK FEE**

**R150 PER MODULE**













# Our Campuses

## Pretoria

**012 442 5053**  
**072 425 4103**

Constantia Building 2nd floor.  
(On top of Creation furniture)  
291 Thabo sehume & Francis Baard Str,  
(previously: Andries & Schoeman Str)

## Witbank

**013 250 0071**  
**072 425 4103**

No.30 Beatty Cnr, Roads Str.  
Witbank Mpumalanga  
(next to Beatty Clinic)

## Polokwane

**015 007 9044**  
**072 425 4103**

51 Landros Mare Street  
Crn Thabo Mbeki Street  
On Top Of Pie City

## Rusternburg

## Burgersfort

## Durban

**013 007 9092**  
**072 425 4103**

Cnr Marone & Riebbok Str, Kgotso  
Building, Behind OK Furniture next  
to Department Of Labour

[www.collegeonhills.co.za](http://www.collegeonhills.co.za)

To Register Visit any of our Branches Sms or WhatsApp your names surname, course,  
town u wish to study at 072 425 4103 you can register online [www.collegeonhills.co.za](http://www.collegeonhills.co.za)

**R300 REGISTRATION FEE**



HW592LP00073



DHET: 2010/FE07/106



SDP1224/19/00139



ETDPS010961